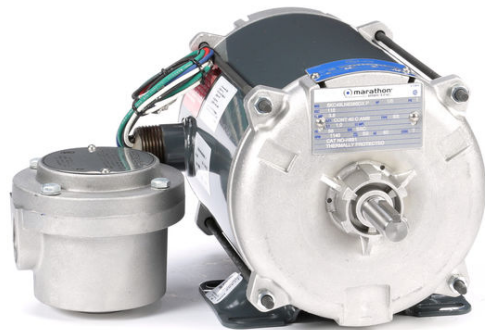


# PRODUCT INFORMATION PACKET

Model No: 5KC49LN6386  
Catalog No: H891  
1/6, 1200, EPNV, 56, 1/60/115  
Explosion Proof



Regal and Marathon are trademarks of Regal Beloit Corporation or one of its affiliated companies.  
©2020 Regal Beloit Corporation, All Rights Reserved. MC017097E



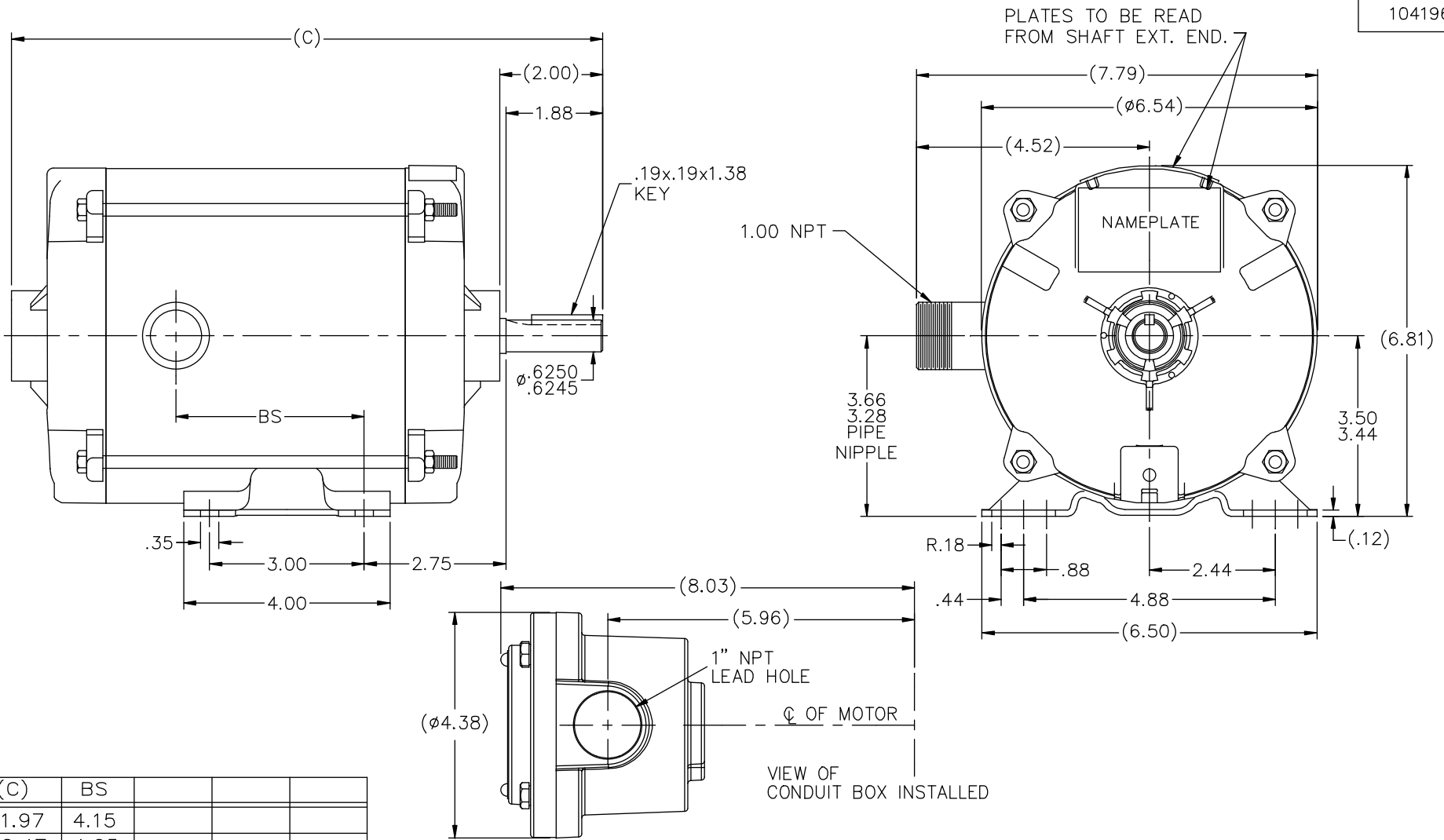
### Nameplate Specifications

|                            |                                       |                        |                       |
|----------------------------|---------------------------------------|------------------------|-----------------------|
| Output HP                  | <b>0.17 HP</b>                        | Output KW              | <b>0.13 kW</b>        |
| Frequency                  | <b>60 Hz</b>                          | Voltage                | <b>115 V</b>          |
| Current                    | <b>4.1 A</b>                          | Speed                  | <b>1140 RPM</b>       |
| Service Factor             | <b>1</b>                              | Phase                  | <b>1</b>              |
| Efficiency                 | <b>55 %</b>                           | Duty                   | <b>Continuous</b>     |
| Insulation Class           | <b>B</b>                              | Design Code            | <b>NO DESIGN CODE</b> |
| KVA Code                   | <b>T</b>                              | Frame                  | <b>56</b>             |
| Enclosure                  | <b>Explosion Proof Non Ventilated</b> | Overload Protector     | <b>Automatic</b>      |
| Ambient Temperature        | <b>40 °C</b>                          | Drive End Bearing Size | <b>6203</b>           |
| Opp Drive End Bearing Size | <b>6203</b>                           | UL                     | <b>Listed</b>         |
| CSA                        | <b>N</b>                              | CE                     | <b>N</b>              |
| IP Code                    | <b>54</b>                             |                        |                       |

### Technical Specifications

|                       |                       |                       |                                   |
|-----------------------|-----------------------|-----------------------|-----------------------------------|
| Electrical Type       | <b>Split Phase</b>    | Starting Method       | <b>Across The Line</b>            |
| Poles                 | <b>6</b>              | Rotation              | <b>Selective Counterclockwise</b> |
| Mounting              | <b>Rigid Base</b>     | Motor Orientation     | <b>Horizontal</b>                 |
| Drive End Bearing     | <b>Ball</b>           | Opp Drive End Bearing | <b>Ball</b>                       |
| Frame Material        | <b>Rolled Steel</b>   | Shaft Type            | <b>T</b>                          |
| Overall Length        | <b>12.47 in</b>       | Frame Length          | <b>6.81 in</b>                    |
| Shaft Diameter        | <b>0.625 in</b>       | Shaft Extension       | <b>2 in</b>                       |
| Assembly/Box Mounting | <b>F1 ONLY</b>        |                       |                                   |
| Outline Drawing       | <b>B-104196GE-681</b> | Connection Diagram    | <b>A-102008-72</b>                |

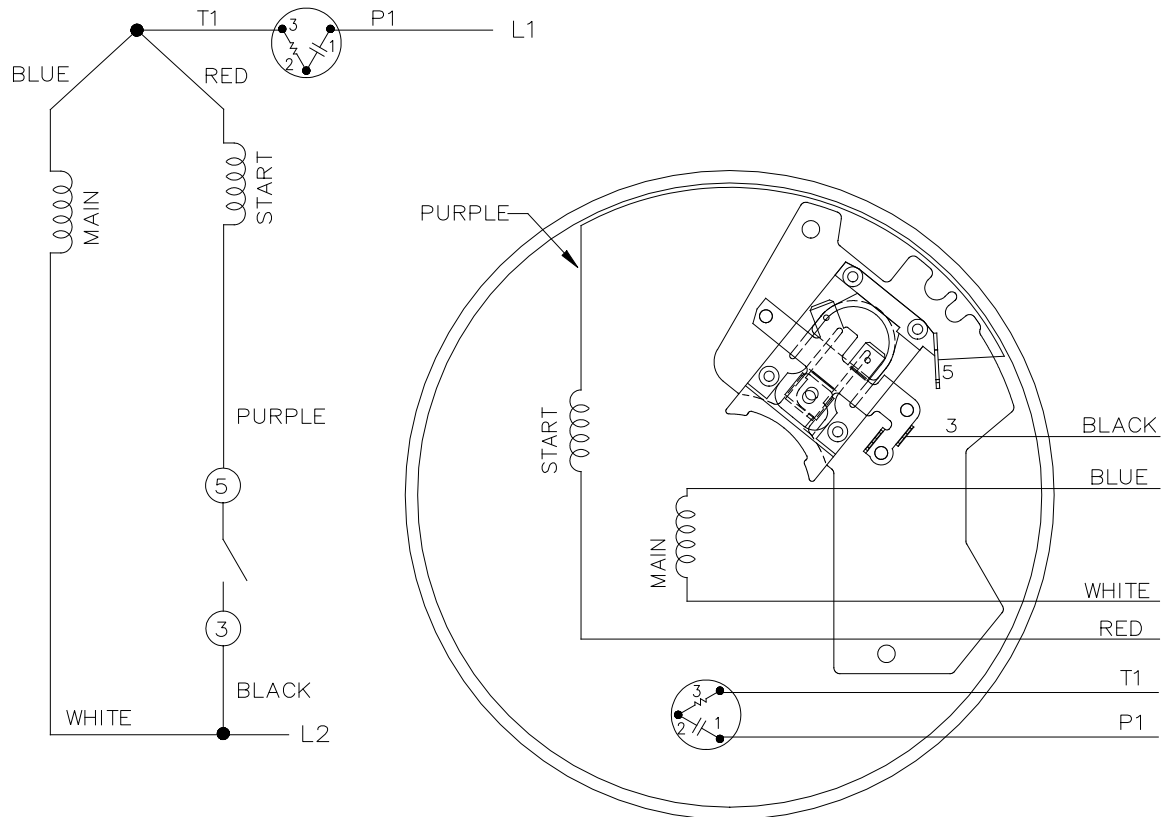
This is an uncontrolled document once printed or downloaded and is subject to change without notice. Date Created: 11/24/2020



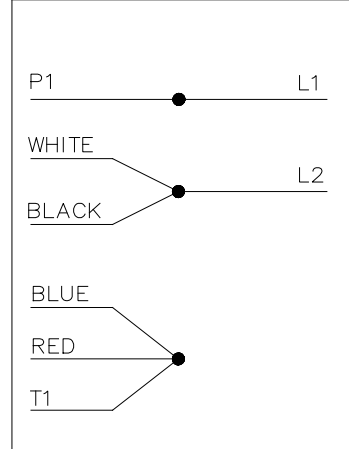
| DASH | (C)   | BS   |  |  |  |
|------|-------|------|--|--|--|
| 631  | 11.97 | 4.15 |  |  |  |
| 681  | 12.47 | 4.65 |  |  |  |
| 731  | 12.97 | 5.15 |  |  |  |
| 781  | 13.47 | 5.65 |  |  |  |
| 831  | 13.97 | 6.15 |  |  |  |
| 881  | 14.47 | 6.65 |  |  |  |
| 931  | 14.97 | 7.15 |  |  |  |
| 981  | 15.47 | 7.65 |  |  |  |

|  |  | TOLERANCES UNLESS SPECIFIED |            | REGAL-BELOIT CORPORATION |          | DRAWING NO. 104196GE |                          |
|--|--|-----------------------------|------------|--------------------------|----------|----------------------|--------------------------|
|  |  | DEC.                        | INCHES     | CHK                      | ML       | APPD                 | DRN                      |
| 4  | COND. BOX INSTALLED VIEW UPDATED PER ECR-0044571 | UD                          | 10/15/13   | ST                       | .X       | ±.1                  | CHK ML 01-12-05          |
| 3  | REVISED C'BOX PER CN40784A                       | JJB                         | 02/23/2007 | ML                       | .XX      | ±.03                 | APPD DRN 01-13-05        |
| 2  | CHANGED LOGO TO REGAL BELOIT                     | TAT                         | 09-07-2005 | ML                       | .XXX     | ±.005                | SCALE 17=32              |
| 1  | SHOWED CORRECT LOGO, ADD GE TO PART NO           | MJK                         | 12/20/2004 |                          | .XXXX    | ±.0005               | REF                      |
| NO.  | REVISION   | BY & DATE                   | CHK        | ANG                      | ±7'30"   | FINISH               | FMF                      |
| THIS DRAWING IN DESIGN AND DETAIL IS OUR PROPERTY AND MUST NOT BE USED EXCEPT IN CONNECTION WITH OUR WORK ALL RIGHTS OF DESIGN AND INVENTION ARE RESERVED THIS IS AN ELECTRONICALLY GENERATED DOCUMENT - DO NOT SCALE THIS PRINT |  |                             |            | RFP                      | CAD FILE | 104196ge             | PREV                     |
|  |  |                             |            | DIST                     | WP       | SIZE                 | DRAWING NO. PAGE OF REV. |
|  |  |                             |            |                          |          | B                    | 104196GE 4               |


102008-72



LOW VOLTAGE  
WITH PROTECTOR  
SELECT ROTATION



FOR C.W. ROTATION  
INTERCHANGE RED WITH  
BLACK LEAD

|  |             |     |            |                                |                    |   |             |                     |      |
|--|-------------|-----|------------|--------------------------------|--------------------|---|-------------|---------------------|------|
|  |             |     |            | TOLERANCES<br>UNLESS SPECIFIED |                    |  <b>Regal Beloit America, Inc.</b> | DRAWN       | SKM                 |      |
|  |             |     |            | DEC.                           | INCHES             |   | CHK         |                     |      |
|  |             |     |            | .X                             | ±.1                |   | APPD        | SKM                 |      |
|  |             |     |            | .XX                            | ±.02               |   | SCALE       | 5=8                 |      |
|  |             |     |            | .XXX                           | ±.005              |   | REF         | 102008-64           |      |
| A  | NEW DRAWING | SKM | 09/05/2017 | SKM                            | .XXXX              | ±.0005  | MAT'L.      | FMF                 |      |
| NO.  | REVISION    |     | BY & DATE  | CHK                            | ANG                | ±7'30"  | FINISH      | PREV                |      |
| THIS DRAWING IN DESIGN AND DETAIL IS OUR PROPERTY AND MUST NOT BE USED EXCEPT IN CONNECTION WITH OUR WORK ALL RIGHTS OF DESIGN AND INVENTION ARE RESERVED THIS IS AN ELECTRONICALLY GENERATED DOCUMENT - DO NOT SCALE THIS PRINT |             |     |            | RFP                            | CAD FILE 102008-72 |   | SIZE        | DRAWING NO. PAGE OF | REV. |
|  |             |     |            | DIST                           | WP                 |   | A 102008-72 | A                   |      |

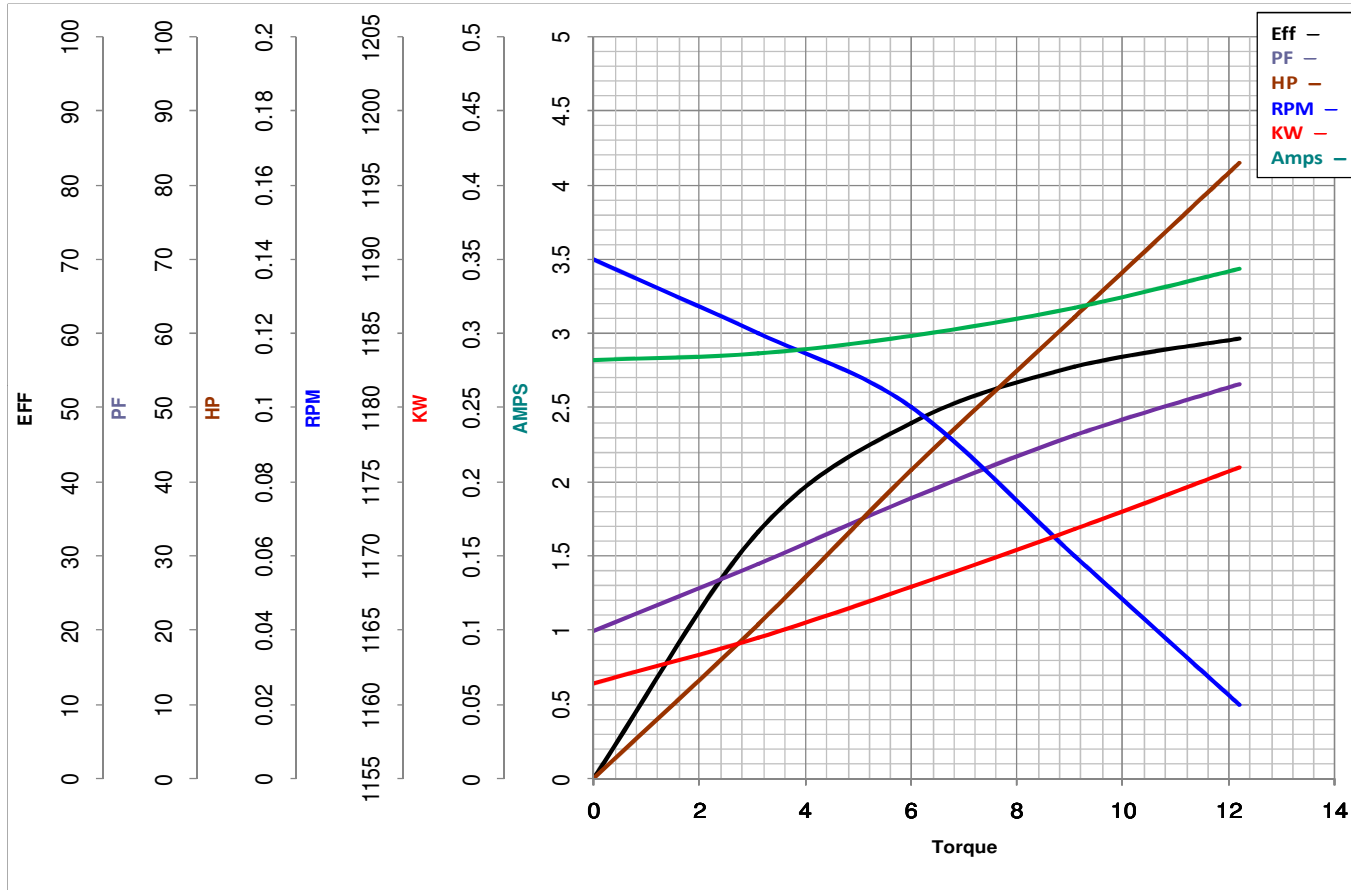






**MARATHON ELECTRIC CORPORATION**  
TYPICAL PERFORMANCE CURVE for AC MOTOR

Customer \_\_\_\_\_ Curve at 115 Volts HP 0.166 PHASE 1  
60 HZ  
 Model No 5KC49LN6386 0.166 HP VOLTS 115  
 Catalog No H891 HZ 60 RPM 1140



|           |             |       |                 |                 |       |
|-----------|-------------|-------|-----------------|-----------------|-------|
|           |             |       | Torque in Oz.Ft |                 |       |
| FL TORQUE | <u>12.2</u> | Oz.Ft | FL AMPS         | <u>4.1</u>      |       |
| BD TORQUE | <u>28.0</u> | Oz.Ft | PU TORQUE       | <u>20.4</u>     | Oz.Ft |
| LR TORQUE | <u>21</u>   | Oz.Ft | LR AMPS         | <u>29</u>       |       |
| WINDING   | ZS607-1     |       | Date            | <u>2/4/2019</u> |       |